



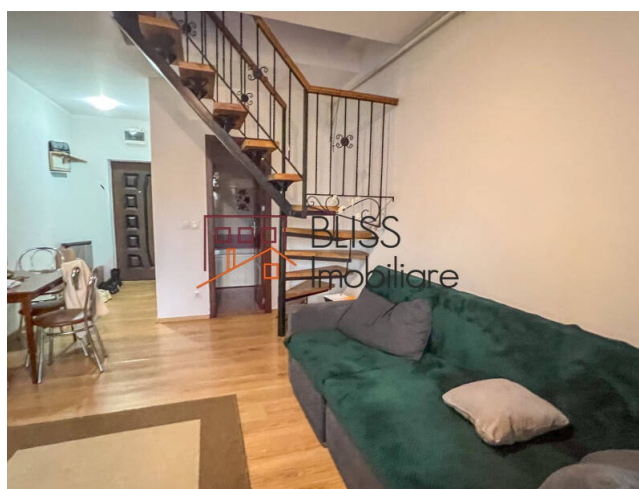
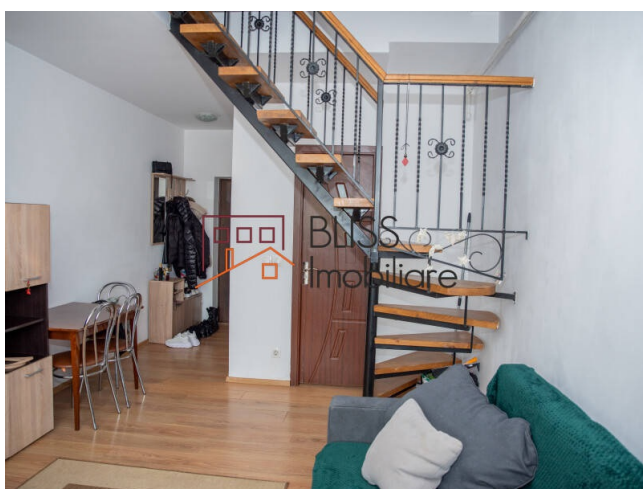
Updated on 6 Mai 2026

2 Bedroom Apartment, Close to Metro Station

Web Reference

#144033

 Aparatorii Patriei, Bucharest



<http://3.72.183.126/en/apartment-2-bedrooms-for-sale-berceni-popesti-leordeni-bucharest-144033>

Description

3-room apartment with separate layout, located on the 4th floor of a 1972 building, a few minutes from Apărătorii Patriei metro station.

Upper Floor Apartment for Intimacy and Natural Light

The apartment has 56 sqm usable area and approximately 60 sqm built area, suitable for personal residence or investment purposes.

Layout

- Living room
- 2 bedrooms
- Separate kitchen
- Bathroom
- Storage spaces
- Separate layout

4th floor of 4

- No neighbors above
- Good natural light
- Increased privacy

Location – Berceni / Apărătorii Patriei area

- Apărătorii Patriei metro station – within walking distance
- Quick access to Șoseaua Berceni and Dimitrie Leonida Boulevard
- Supermarkets and local shops
- Pharmacies and services
- Schools

A practical 2-bedroom apartment with good connectivity and efficient space distribution.


Property details	
Rooms no.	3
Useable surface	56m ²
Constructed surface	60m ²
Apartment type	Apartment
Type of rooms	Independent
Bedrooms no.	2
Kitchens no.	1
Bathrooms no.	1
Toilets no.	1
Building type	Block
Year built	1972
Config	P+4+M
Floor	4
State	Finished
Elevator	No

Amenities

 Equipped kitchen

 Furnished

 City heating

 Air conditioning

Location



Photos

