



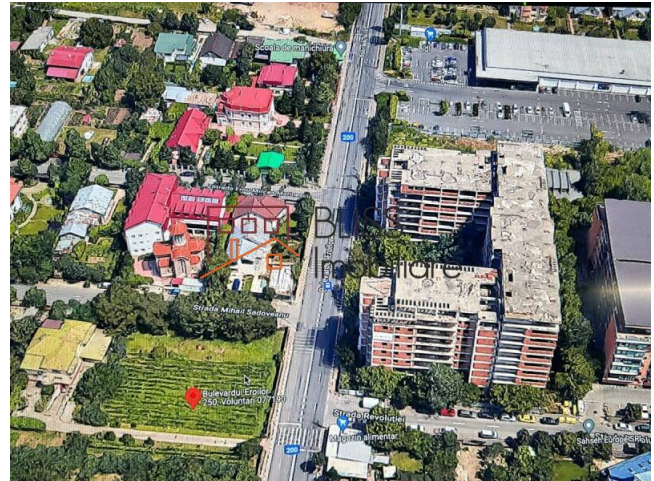
Updated on 9 Septembrie 2025

3,000 sqm Land in Voluntari

Popasului | Padurea Cretuleasca | Matei Millo,
Bucharest / Ilfov

810,000 EUR +VAT
270 EUR / m²

Web Reference
#906247



<http://3.72.183.126/en/land-for-sale-iancu-nicolae-pipera-bucharest-ilfov-906247>

Description

3,000 sqm Land in Voluntari – Corner of Bulevardul Eroilor and Strada Mihail Sadoveanu

Ideal for Residential, Commercial, or Mixed-Use Developments

This generous plot, located in one of the most dynamic and attractive areas in the north of Bucharest, offers a rare combination of excellent visibility, accessibility, and high development potential. Its strategic position, right at the intersection of Bulevardul Eroilor and Strada Mihail Sadoveanu, ensures maximum exposure for any type of project, while also benefiting from quick access to the main roads and points of interest in the area.

Key Features:

- Total area: 3,000 sqm
- Location: corner plot with dual frontage, ideal for projects requiring high visibility
- Easy access: to Șoseaua Colentina, Șoseaua Andronache, Șoseaua Pipera-Tunari, and the Bucharest Ring Road
- Utilities: water, gas, electricity, and sewage available nearby
- Infrastructure: area with asphalted roads and access for heavy vehicles

Development Potential:

The versatility of the land allows for a wide range of projects, including:

- Residential complexes

- Office buildings or commercial spaces
- Mixed-use residential-commercial developments

Competitive Advantages:

- Corner positioning offering double visibility and double access
- Close to expanding residential and commercial areas
- Developed urban infrastructure and quick connections to the rest of the city
- Area with strong economic growth, attractive for long-term investments

This land is a unique opportunity for developers and investors looking to capitalize on the potential of a premium location, offering benefits for both commercial and residential projects.

Land details	
Land type	Constructible land
Size	3,000 m ²
Street openings	
Road type	Asphalt

Location

